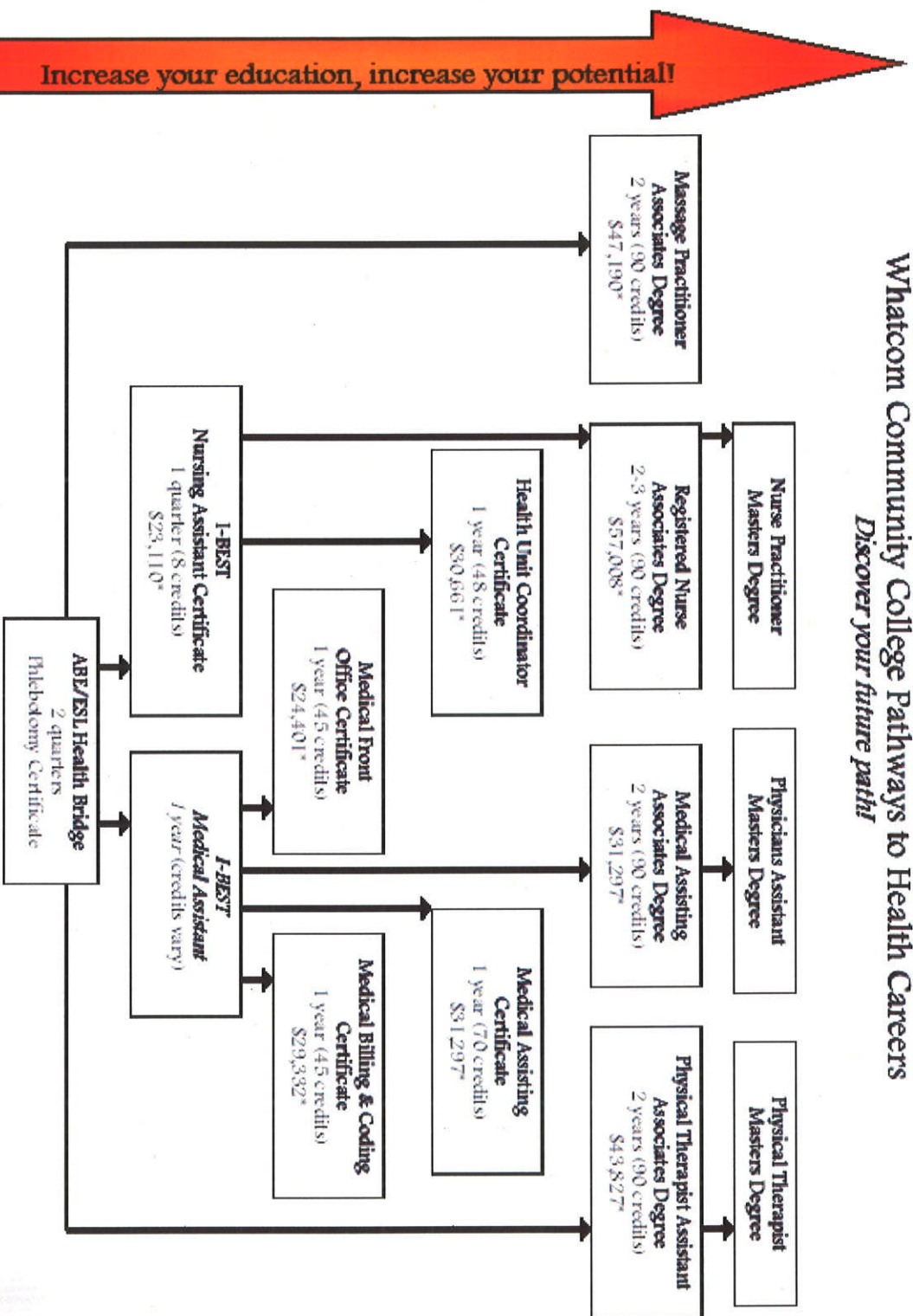


Whatcom Community College Pathways to Health Careers

Discover your future path!



* Wage data based on Median Wage for Whatcom County as of March 2008—Workforce Explorer (www.workforceexplorer.com)

Note of Race Discrimination: Whatcom Community College does not discriminate on the basis of race, color, national origin, religion, gender, disability, sexual orientation, or age in its programs and activities. The following persons have been designated to handle inquiries regarding the non-discrimination policies: Director for Human Resources, 217 W. 6th St. 2nd Floor, Pottsville, PA 17854, (610) 647-3247; VP of Academic Affairs, 217 W. 6th St. 2nd Floor, Pottsville, PA 17854, (610) 647-3247. This policy was funded in full by a grant awarded under the Community Based Job Training

APPENDIX B
Pathway Diagram Example